

# Interferon Alfa Subtypes and Levels of Type I Interferons in the Liver and Peripheral Mononuclear Cells in Patients With Chronic Hepatitis C and Controls

YURDANA CASTELRUIZ, ESTHER LARREA, PATRICIA BOYA, MARÍA-PILAR CIVEIRA, AND JESÚS PRIETO

Viral infections stimulate the transcription of interferon type I, which includes IFN- $\alpha$  (13 subtypes) and IFN- $\beta$  (a single substance). Hepatitis C virus (HCV) infection is remarkable by its ability to evade host antiviral defenses; however, there is little information as to whether endogenous IFN is activated or not in this disease. Additionally, despite the fact that the various IFN- $\alpha$  subtypes may differ in biological activity, there are no data concerning the IFN- $\alpha$  subtypes specifically expressed in normal and diseased liver tissue. Thus, we have analyzed the IFN- $\alpha$  subtypes and the mRNA levels of type I IFNs in samples of normal liver tissue and in liver from patients with chronic hepatitis C. Similar studies were performed in peripheral blood mononuclear cells (PBMC) from patients and controls. After amplification and cloning of IFN- $\alpha$  cDNA, we observed that 98 of the 100 clones from normal liver tissue corresponded to the IFN- $\alpha$ 5 subtype. However, in livers with chronic hepatitis C and in PBMC from controls and patients, a variety of subtypes, in addition to IFN- $\alpha$ 5, were detected, suggesting a participation of infiltrating leukocytes in the production of IFN- $\alpha$  in livers with chronic hepatitis C. As compared with controls, patients with chronic hepatitis C showed a significant increase in IFN- $\beta$  mRNA in both the liver and PBMC, while IFN- $\alpha$  mRNA was significantly increased in PBMC but markedly reduced in liver tissue. In conclusion, IFN- $\alpha$ 5 is the sole IFN- $\alpha$  subtype expressed in normal liver tissue. The hepatic levels of IFN- $\alpha$  are reduced in chronic hepatitis C, an event that may favor viral persistence. (HEPATOLOGY 1999;29:1900-1904.)

Interferon alfa (IFN- $\alpha$ ) and IFN- $\beta$ , two members of the type I IFN family, are produced by a great diversity of cells in response to viral infections.<sup>1,2</sup> Type I IFNs constitute the first line of defense against viruses by displaying direct antiviral effects and also by interacting with the cytokine cascade and

the immune system, having regulatory effects on growth and differentiation of T cells.<sup>3,4</sup>

While IFN- $\beta$  is a glycoprotein product of a single gene, IFN- $\alpha$  is a family of 13 structurally related polypeptides (subtypes), each encoded by a separate gene.<sup>5</sup> Human IFN- $\alpha$  genes are expressed constitutively in organs of normal individuals,<sup>6,7</sup> and show restricted cell-type expression.<sup>8</sup> It has been shown that the antiviral activity and immunoregulatory properties differ among IFN- $\alpha$  subtypes.<sup>9</sup> However, tissue specificity and the biological role of the diverse IFN- $\alpha$  subtypes remain to be determined. In particular, little is known concerning the IFN- $\alpha$  subtypes expressed in normal and diseased livers.

Viral infections activate transcription of type I IFN genes.<sup>10</sup> The promoters of IFN- $\alpha$  and IFN- $\beta$  genes contain different response elements.<sup>11</sup> Functional differences between the promoters explain, at least in part, the tissue-specific expression patterns of the two IFN subfamilies. The specificity is achieved by the interaction of virus-induced cell-specific factors with regulatory domains in the promoters of IFN genes.<sup>12,13</sup> As in other chronic viral diseases,<sup>14</sup> the tendency of hepatitis C virus (HCV) infection to evolve to chronicity may depend not only on its ability to escape immunity,<sup>15,16</sup> but also on its capacity to deactivate the endogenous IFN system. In fact, *in vitro* studies have suggested that HCV may interfere with intracellular signaling of type I IFNs<sup>17</sup>; however, there are no data in the literature on the possible effects of this virus on the transcriptional expression of IFN- $\alpha$  and - $\beta$  *in vivo*. A main reason for this is technical problems, because mRNA of type I IFN is not abundant, and techniques based on cDNA amplification have the risk of amplifying genomic DNA along with cDNA as a result of the fact that type I IFN genes lack introns. In this work, we have analyzed the expression of IFN- $\alpha$  subtypes in samples of normal liver tissue obtained at laparotomy and in liver biopsies from patients with chronic hepatitis C. In addition, we have used a sensitive and specific polymerase chain reaction (PCR)-based technique to determine the levels of mRNA of IFN- $\alpha$  and - $\beta$  in the liver and peripheral blood mononuclear cells (PBMC) in patients with chronic hepatitis C and controls to better understand the interaction of HCV with the endogenous IFN system.

## PATIENTS AND METHODS

Samples of normal liver tissue were obtained from 11 patients (8 males and 3 females; age range, 49-70 years) who underwent laparotomy because of early stages of gastrointestinal neoplasms or uncomplicated hydatidic cyst. These subjects had not received anti-inflammatory or cytotoxic therapy previous to operation, and in all cases, histological examination of the surgical biopsy showed normal liver architecture. We also studied liver biopsies from 16

Abbreviations: IFN- $\alpha$ , interferon alfa; HCV, hepatitis C virus; PCR, polymerase chain reaction; PBMC, peripheral blood mononuclear cells.

From the Department of Medicine and Liver Unit, Clinica Universitaria, University of Navarra, Pamplona, Spain.

Received December 21, 1998; accepted March 29, 1999.

Supported by grants SAF97-0223 from CICYT (Spain), 1852-95 from Gobierno de Navarra (Spain), and also by Fundacion Echebano (Spain).

Address reprint requests to: Prof. J. Prieto, Department of Medicine, Clinica Universitaria, Apartado 4209, 31080, Pamplona, Spain. E-mail: jprieto@unav.es; fax: 34-948296785.

Copyright © 1999 by the American Association for the Study of Liver Diseases.  
0270-9139/99/2906-0038\$3.00.0

patients with chronic hepatitis C (9 males and 7 females; age range, 24-71 years), of whom 5 had cirrhosis. Genotype 1b was found in 11 patients. Liver specimens were also taken from another control group ( $n = 12$ ) with miscellaneous liver disorders unrelated to HCV (cirrhosis of alcoholic or cryptogenic origin [ $n = 6$ ], hepatitis B surface antigen-positive chronic hepatitis [ $n = 5$ ], and primary biliary cirrhosis stage II). In this miscellaneous group, liver damage, as estimated by the histological Knodell's index, was similar to that of patients with chronic HCV infection. Written consent was obtained in all cases.

PBMC were collected from 22 healthy controls (12 females; age range, 25-66 years) and 23 patients with chronic hepatitis C (14 males; age range, 29-69 years; 4 with cirrhosis; 21 infected with genotype 1b). Liver biopsy for the study of IFN transcripts was available in 8 of these patients.

In all cases, diagnosis of chronic hepatitis C was based on raised serum transaminases for more than 6 months, positivity for anti-HCV antibodies (second-generation enzyme-linked immunosorbent assay; Ortho Diagnostic Systems, Raritan, NJ), presence of HCV RNA by reverse-transcription PCR in serum, and histological evidence of chronic hepatitis. None of the patients had received IFN treatment at least for 1 year before the study, except 1 case in which liver biopsy was taken 6 months after finishing treatment.

Total RNA was extracted from liver samples, and IFN- $\alpha$  and IFN- $\beta$  mRNA were determined by semiquantitative reverse-transcription PCR in a Perkin-Elmer Gene Amp PCR System 2400 (Perkin Elmer, Foster City, CA). Before the reverse transcription, 2  $\mu$ g of total RNA was treated with 1 U of deoxyribonuclease (DNase I amplification grade, Gibco-BRL, Gaithersburg, MD) to remove all the contaminating DNA. In all cases, the presence of traces of DNA was excluded by performing control reactions without reverse transcriptase. RNA was reverse-transcribed (60 minutes at 37°C) with 400 U of M-MuLV reverse transcriptase (Gibco-BRL) in 40- $\mu$ L volume of 5 $\times$  reverse-transcriptase buffer (250 mmol/L Tris-HCl [pH 8.3], 375 mmol/L KCl, 15 mmol/L MgCl<sub>2</sub>), supplemented with 5 mmol/L dithiothreitol, 0.5 mmol/L deoxynucleoside triphosphate (Boehringer Mannheim, Mannheim, Germany), 48 U ribonuclease inhibitor (Promega Corporation, Madison, WI), and 400 ng random hexamers (Boehringer Mannheim, Mannheim, Germany). After heating (95°C, 1 minute) and quick-chilling on ice, an aliquot of 10  $\mu$ L (0.5  $\mu$ g) of the complementary DNA pool was used for PCR amplification of IFN- $\alpha$  or IFN- $\beta$  in 50  $\mu$ L of 10 $\times$  PCR buffer (160 mmol/L [NH<sub>4</sub>]<sub>2</sub>SO<sub>4</sub>, 670 mmol/L Tris-HCl [pH 8.8], 0.1% Tween-20), containing upstream and downstream primers (40 ng each for IFN- $\alpha$  and 60 ng each for IFN- $\beta$ ), 1.2 mmol/L MgCl<sub>2</sub>, and 2 U of Biotaq DNA polymerase (Bioline, London, UK). Blank reactions with no RNA were performed in all experiments. As internal control for each sample, PCR amplification of a fragment of  $\beta$ -actin cDNA (using a 10- $\mu$ L aliquot of the cDNA pool) was performed. IFN- $\alpha$  cDNA fragments were amplified by 30 or 33 cycles (PBMC or liver, respectively) (94°C, 60°C, and 72°C for 20, 15, and 30 seconds for each step, respectively), IFN- $\beta$  was amplified by 30 or 35 cycles (PBMC or liver, respectively) (94°C, 58°C, and 72°C for 20, 15, and 30 seconds for each step, respectively), and  $\beta$ -actin was amplified by 18 or 25 cycles (PBMC or liver, respectively) (94°C, 55°C, and 72°C for 20, 15, and 30 seconds for each step, respectively), a protocol that avoided interference of the plateau effect. We used universal primers designed to amplify all IFN- $\alpha$  subtypes. Oligonucleotides (5'-3') d(TCCATGAGATGATCCAGCAG) and d(ATTCTGCTCTGACAACCTCCC) were the upstream and downstream primers, respectively, for amplification of a 274-bp fragment from human IFN- $\alpha$  cDNA<sup>18</sup> that is located between nucleotides 240-514.<sup>19</sup> Primers were designed to obtain the same amplification efficiency for all IFN- $\alpha$  subtypes. The two primers correspond to the two most conserved regions among all subtypes. The sequence for annealing of the downstream primer is identical for all of them. The annealing sequence of the upstream primer is the same for subtypes 2, 4, 5, 7, 8, 10, 16, 17, and 21, and it differs in only one nucleotide in subtypes 1, 14, and 22 (this change does not occur in the 3' end of

the primer). Also, no other internal regions for annealing of the primers exist in the different subtypes (Oligo 4.05 Primer Analysis Software, National Bioscience Inc., Plymouth, MN). d(TCTAGCAC-TGGCTGGAATGAG) and d(GTTTCGGAGGTAACCTGTAAG) were the primers used to amplify a 276-bp fragment from human IFN- $\beta$  cDNA that is located between nucleotides 349-625.<sup>20</sup> d(TCTACAAT-GAGCTGCGTGTG) and d(GGTGAGGATCTTCATGAGGT) were the primers used for amplification of a 314-bp fragment (nucleotides 1319-2079) from the reported human  $\beta$ -actin gene sequence.<sup>21</sup>

Identification of IFN- $\alpha$  subtype transcripts was performed by cloning the PCR products using the TOPO TA cloning kit (Invitrogen, Carlsbad, CA). Clones from each insert were sequenced in ABI PRISM 310 Genetic Analyzer (Perkin Elmer) using the dye Rhodamine terminator cycle sequencing kit (Perkin Elmer).

After PCR amplification, 20- $\mu$ L aliquots of the PCR reactions were electrophoresed in 2% agarose gel stained with ethidium bromide. The bands were visualized with an ultraviolet lamp and analyzed with commercial software (Molecular Analyst/PC, Bio-Rad, Hercules, CA). Finally, values corresponding to IFN- $\alpha$  or IFN- $\beta$  mRNA were normalized to those of  $\beta$ -actin mRNA, and results were expressed as the ratio of IFN- $\alpha$  or IFN- $\beta$  to  $\beta$ -actin. When IFN- $\alpha$  and IFN- $\beta$  mRNA values were normalized to those of  $\beta$ -actin mRNA, it was assumed that  $\beta$ -actin mRNA was constantly expressed in patients with chronic hepatitis C, normal controls, and patients with other liver diseases unrelated to HCV, both in PBMC and liver. In fact, we compared  $\beta$ -actin mRNA values among the three groups studied, and no differences were observed (data not shown). Constant expression of  $\beta$ -actin mRNA was also found in a previously reported series of patients and controls in which the same semiquantitative PCR procedure was used to analyze tumor necrosis factor  $\alpha$  mRNA values in liver and PBMC.<sup>22</sup>

Validation experiments on PCR assays using known quantities of total RNA showed linearity of the counts of amplification bands from 0.125 to 1  $\mu$ g in both liver and PBMC for IFN- $\alpha$ , IFN- $\beta$ , and  $\beta$ -actin. Thus 0.5  $\mu$ g was chosen as the suitable amount of total RNA to avoid the plateau effect. To analyze whether changes in IFN- $\alpha$  or IFN- $\beta$  mRNA levels resulted in changes in the ratio of IFN- $\alpha$  or IFN- $\beta$  PCR product/ $\beta$ -actin PCR product, we performed reverse-transcription PCR with 0.1  $\mu$ g of total normal liver RNA containing serial dilutions of known quantities of IFN- $\alpha$  or IFN- $\beta$  riboprobes, which were obtained by run-off transcription of a plasmid that contained a 274- and 276-bp inserts from the human IFN- $\alpha$  and - $\beta$  cDNA. With increasing amounts of IFN- $\alpha$  and - $\beta$  riboprobe used in the reaction, we obtained a progressive increase in the IFN- $\alpha$  or - $\beta$ / $\beta$ -actin ratio (data not shown). The coefficient of interassay variation for IFN- $\alpha$ / $\beta$ -actin and IFN- $\beta$ / $\beta$ -actin was 15% and 12%, respectively. The identity of the PCR product from IFN- $\alpha$  and IFN- $\beta$  cDNA amplification was verified by automatic sequencing (ABI PRISM 310 Genetic Analyzer, Perkin Elmer).

Detection, quantitation, and genotyping of HCV RNA were performed as previously described.<sup>22,23</sup>

Results of IFN- $\alpha$  and IFN- $\beta$  are given as mean  $\pm$  SEM. Normality was assessed with the Shapiro-Wilks test. Statistical analysis of IFN- $\alpha$  and IFN- $\beta$  levels in PBMC and in the liver were performed using nonparametric (Kruskal-Wallis and Mann-Whitney *U*) tests. Associations between quantitative variables were studied with Spearman's correlation coefficient. Qualitative variables were analyzed with the Fisher exact test. All *P* values were two-tailed. SPSS 6.0 for Windows was used for the statistical analysis.

## RESULTS

**IFN- $\alpha$  Subtypes in the Liver and in PBMC.** RNA was extracted from liver samples and PBMC, and IFN- $\alpha$  cDNA was amplified with universal primers for all IFN- $\alpha$  subtypes. After cloning and sequencing of PCR products, we found that 98 of the 100 clones derived from six samples of normal liver tissue showed the sequence corresponding to IFN- $\alpha$ 5 subtype (Table 1). We also sequenced 98 clones obtained from liver

TABLE 1. IFN- $\alpha$  Subtypes in Normal Liver Tissue and in Liver From Patients With Chronic Hepatitis C

	No. of Clones Tested	$\alpha 1$	$\alpha 4$	$\alpha 5$	$\alpha 10$	$\alpha 17$	$\alpha 21$	$\alpha 22$
Normal Liver								
Total	100	0	0	98	1	0	0	1
Patients								
P 1	16	0	0	12	0	2	2	0
P 2	15	0	1	10	0	0	4	0
P 3	20	0	0	20	0	0	0	0
P 4	5	0	0	5	0	0	0	0
P 5	16	2	1	10	0	0	3	0
P 6	14	0	1	12	0	0	1	0
P 7	12	0	0	12	0	0	0	0
Total	98	2	3	81	0	2	10	0

NOTE. Normal liver are samples from 6 normal liver tissues obtained at laparotomy. P 1-7 are samples from 7 different patients with chronic hepatitis C. Figures represent the number of cDNA clones showing the sequence corresponding to the indicated IFN- $\alpha$  subtype.

biopsies from 7 patients with chronic hepatitis C. Of these, only 81 corresponded to IFN- $\alpha 5$  ( $P < .001$  as compared with samples of normal liver tissue). In the liver of patients with chronic hepatitis C, other subtypes ( $\alpha 1$ ,  $\alpha 4$ ,  $\alpha 17$ , and  $\alpha 21$ ), in addition to  $\alpha 5$ , were represented (Table 1), probably reflecting the production of IFN- $\alpha$  not only by hepatocytes, but also by infiltrating leukocytes.

As shown in Table 2, a combination of different IFN- $\alpha$  subtypes was found in PBMC from patients with HCV infection and healthy controls. In PBMC from healthy subjects, 15 of 43 clones analyzed corresponded to IFN- $\alpha 5$ , whereas this subtype was found in 31 of 45 clones from PBMC of patients with chronic hepatitis C ( $P < .005$ ).

**Transcriptional Expression of IFN- $\alpha$  and - $\beta$  in the Liver and in PBMC.** IFN- $\alpha$  and IFN- $\beta$  mRNA levels were measured in PBMC and liver tissue from patients with chronic hepatitis C and controls (Table 3). The levels of IFN- $\alpha$  mRNA were significantly increased in PBMC from chronic hepatitis C patients as compared with normal controls. However, IFN- $\alpha$  mRNA values were found to be significantly reduced in the liver of patients with chronic hepatitis C with respect to samples of normal liver tissue and also with respect to values found in a miscellaneous group of chronic liver diseases. The five cases with chronic hepatitis B included in the disease control group had values of IFN- $\alpha$  mRNA in the liver ( $0.33 \pm 0.15$ ) similar to those found in normal hepatic tissue and

TABLE 2. IFN- $\alpha$  Subtypes in PBMC From Healthy Controls and From Patients With Chronic Hepatitis C

	No. of Clones Tested	$\alpha 1$	$\alpha 2$	$\alpha 4$	$\alpha 5$	$\alpha 7$	$\alpha 8$	$\alpha 10$	$\alpha 16$	$\alpha 21$	$\alpha 22$
Controls											
Total	43	14	1	1	15	1	2	2	0	6	1
Patients											
P 1	8	0	0	0	7	0	0	0	0	1	0
P 2	9	0	0	0	5	0	0	0	0	4	0
P 3	11	0	0	2	4	1	0	1	2	0	1
P 4	8	0	0	0	7	0	0	0	0	1	0
P 8	9	0	1	0	8	0	0	0	0	0	0
Total	45	0	1	2	31	1	0	1	2	6	1

NOTE. Controls are PBMC samples from 5 healthy subjects; P1-8 are PBMC samples from 5 different patients with chronic hepatitis C. Figures represent the number of cDNA clones showing the sequence corresponding to the indicated IFN- $\alpha$  subtype.

TABLE 3. mRNA Levels of Type I IFNs in the Liver and in PBMC From Patients With Chronic Hepatitis C and From Controls

	Liver			PBMC	
	Normal Liver Tissue (n = 11)	Chronic Hepatitis C (n = 16)	Other Liver Diseases (n = 12)	Healthy Controls (n = 22)	Chronic Hepatitis C (n = 23)
IFN- $\alpha$	$0.43 \pm 0.12$	$0.12 \pm 0.03^*$	$0.24 \pm 0.03$	$0.88 \pm 0.17$	$2.53 \pm 0.37^\dagger$
IFN- $\beta$	$1.03 \pm 0.16$	$1.73 \pm 0.23^\ddagger$	$0.92 \pm 0.17$	$0.76 \pm 0.09$	$1.41 \pm 0.16^\ddagger$

NOTE. Values are expressed as the ratio IFN- $\alpha$  or IFN- $\beta$  mRNA/ $\beta$ -actin mRNA. Data are given as means  $\pm$  SEM.

\* $P < .01$  vs. normal liver and other liver diseases.

$^\dagger P < .001$  vs. healthy controls.

$^\ddagger P < .05$  vs. normal liver and other liver diseases.

significantly higher than patients with chronic hepatitis C ( $P < .02$ ).

As was the case for IFN- $\alpha$ , the levels of IFN- $\beta$  mRNA were raised in PBMC from patients with chronic hepatitis C as compared with healthy subjects (Table 3). However, in contrast to IFN- $\alpha$ , IFN- $\beta$  mRNA was significantly increased in the liver of patients with chronic HCV infection as compared with those found in specimens of normal liver tissue and also as compared with those observed in biopsies from patients with miscellaneous liver disorders (Table 3). IFN- $\beta$  mRNA was not increased in hepatic tissue from the 5 patients with chronic hepatitis B included in the disease control group ( $1.02 \pm 0.74$ ) as compared with values found in normal liver tissue.

Figure 1 shows an example of the amplification bands of IFN- $\alpha$ , IFN- $\beta$ , and  $\beta$ -actin cDNAs obtained from specimens of normal liver tissue and liver biopsies from patients with chronic hepatitis C. In each case, the same RNA preparation was used for reverse transcription and amplification of the three gene products. It can be clearly seen that while the intensity of the  $\beta$ -actin band is similar in all cases, the band corresponding to IFN- $\alpha$  is decreased, while that of IFN- $\beta$  is increased in livers with chronic HCV infection as compared with samples of normal liver tissue.

We found that in patients with chronic hepatitis C, IFN- $\beta$

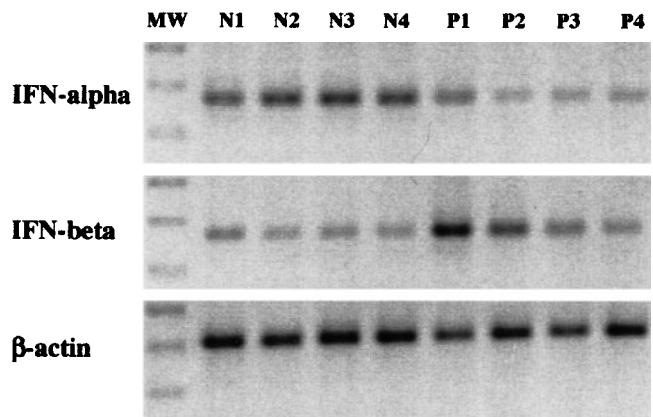


FIG. 1. Amplification bands of IFN- $\alpha$ , IFN- $\beta$ , and  $\beta$ -actin cDNAs obtained from specimens of normal liver tissue (N<sub>1</sub>-N<sub>4</sub>) and liver biopsies from patients with chronic hepatitis C (P<sub>1</sub>-P<sub>4</sub>). It can be seen that the band corresponding to IFN- $\alpha$  is decreased and that of IFN- $\beta$  is increased in livers with chronic HCV infection as compared with samples of normal liver tissue; in contrast, the intensity of the  $\beta$ -actin band is similar in all cases. MW, molecular weight.



mRNA values correlated directly with the histological Knodell's index of liver damage ( $r = .66$ ;  $P < .01$ ) and with serum aspartate aminotransferase ( $r = .64$ ;  $P < .01$ ). Although the transcriptional expression of IFN- $\alpha$  in the liver was substantially reduced in chronic hepatitis C, a significant correlation between hepatic IFN- $\alpha$  mRNA levels and the Knodell's index ( $r = .54$ ;  $P < .05$ ) was also encountered, suggesting a participation of the mononuclear infiltrate in the production of IFN transcripts. We found no correlation between IFN- $\alpha$  or IFN- $\beta$  mRNA values (in the liver or in PBMC) and the titer of HCV RNA in serum.

## DISCUSSION

In response to viral infections, IFN- $\alpha$  is produced by a great diversity of cell types including mononuclear cells, polymorphonuclear leukocytes, hepatocytes, fibroblasts, Kupffer cells, and dendritic cells.<sup>24-28</sup> IFN- $\beta$  is synthesized mainly by fibroblasts, epithelial cells, and mononuclear cells.<sup>29,30</sup> On the other hand, different studies have shown that IFN- $\alpha$  is constitutively expressed in a variety of tissues such as liver, spleen, kidney, pancreas, and PBMC.<sup>6,7,24</sup> These findings challenge the idea that IFNs are produced only in response to viral infection and point to an as-yet-unclear biological function of IFNs in normal tissues. The present study shows that normal liver tissue expresses almost exclusively the IFN- $\alpha 5$  subtype. In contrast with this restriction to only one IFN- $\alpha$  subtype, other subtypes, similar to those found in PBMC, were observed in livers from patients with chronic hepatitis C, possibly reflecting the participation of infiltrating mononuclear cells in the production of IFN- $\alpha$  transcripts. Interestingly, in patients with chronic HCV infection, the pattern of IFN- $\alpha$  subtypes in PBMC was different to that of normal individuals with a preponderance of subtype 5, a finding of unknown biological significance.

The restriction of IFN- $\alpha$  expression in the liver to only IFN- $\alpha 5$  raises questions about the specific physiological activities of this subtype. In fact, it has been shown that, although IFN- $\beta$  and all subtypes of IFN- $\alpha$  bind to the same receptor, differences in intracellular signaling and biological effects exist among them in specific cell types.<sup>9,31</sup> It is therefore conceivable that IFN- $\alpha 5$  might exert antiviral and other biological effects on liver cells, which could differ from those elicited by other IFN- $\alpha$  subtypes.

HCV infection is characterized by a pronounced tendency to become chronic. This virus has developed the ability to evade both the IFN system and the immune response through mechanisms that remain unclear. In this study, we show that patients with chronic HCV infection exhibit an enhanced expression of IFN- $\beta$  in both the liver and PBMC, as expected for a virus that can infect both hepatocytes and mononuclear cells.<sup>32</sup> However, the effects of HCV on IFN- $\alpha$  are different. In patients with chronic hepatitis C, IFN- $\alpha$  mRNA levels are increased in PBMC but markedly reduced in the liver. Thus, HCV infection causes opposite changes of IFN- $\alpha$  and IFN- $\beta$  in hepatic tissue, decreasing the expression of the former, while increasing the latter. This finding might be explained by the fact that IFN- $\alpha$  and IFN- $\beta$  are induced in viral infections by different mechanisms,<sup>11</sup> and it is possible that HCV may interfere specifically with the induction of IFN- $\alpha$ . The selective interference of HCV with IFN- $\alpha$  expression might indicate a relevant role of IFN- $\alpha$  in controlling this viral infection. Because increased production of IFN- $\alpha$  by hepatocytes has been shown to be associated with resolution

of acute viral hepatitis,<sup>25</sup> one of the strategies by which HCV succeeds in establishing persistent infection might be through mechanisms that impair the expression of IFN- $\alpha$  in the liver. The characterization of the HCV gene products possessing the ability to block the transcriptional machinery of IFN- $\alpha$  will undoubtedly help to understand the pathophysiology of this infection and its tendency to chronicity.

An additional observation in this article is the fact that HCV infection is associated with increased values of IFN- $\alpha$  mRNA in PBMC, while the levels of this transcript are reduced in liver parenchyma. To explain this finding, it should be remembered that IFN- $\alpha$  genes have a regulatory domain within the virus-response element that determines cell-specific gene expression.<sup>8</sup> Thus, it can be thought that interaction of HCV with different cell transcription factors in PBMC and in the liver can arbitrate the opposite changes in IFN- $\alpha$  gene expression found in these two tissues in chronic HCV infection.

In patients with chronic hepatitis C, we observed a positive correlation between the Knodell index of histological hepatic damage and the level of expression of type I IFNs in the liver. This observation might be explained by the participation of infiltrating mononuclear cells in the production of IFN- $\alpha$  and - $\beta$ . Indeed, studies using monoclonal antibodies have shown the presence of IFN-positive cells in the mononuclear infiltrate of liver biopsies from patients with chronic hepatitis B<sup>26</sup> and C.<sup>27</sup> These investigations have demonstrated a good correlation between the number of IFN-positive cells and the intensity of the histological liver damage.

Finally, considering that IFN- $\alpha 5$  is the subtype mainly expressed in hepatic tissue and that IFN- $\alpha$  is decreased in the liver of patients with chronic HCV infection, it is tempting to speculate that IFN- $\alpha 5$  might have a role in the treatment of chronic hepatitis C. This suggestion is supported by studies showing that IFN- $\alpha 5$  is endowed with potent antiviral and antiproliferative properties.<sup>9</sup> At present, lymphoblastoid IFN (a mixture of subtypes with only a small proportion of IFN- $\alpha 5$ ) and the two recombinant IFNs, IFN- $\alpha 2a$  and IFN- $\alpha 2b$ , are used to treat chronic hepatitis C, but fewer than 30% of treated patients exhibit sustained biochemical and virological response.<sup>33</sup> Thus, more efficient therapies are urgently needed. Our data may stimulate further work on the mechanisms used by HCV to impair transcriptional activation of IFN- $\alpha$  in the liver and on the effects of IFN- $\alpha 5$ , the liver-specific IFN- $\alpha$  subtype, on HCV replication.

**Acknowledgment:** The authors thank B. Carte and E. Saez for technical assistance, F Pardo for provision of normal liver samples, and C. Berasain for advice and comments. Y. Castelruiz and E. Larrea contributed equally to this article.

## REFERENCES

1. Sen G, Lengyel P. The interferon system. *J Biol Chem* 1992;267:5017-5020.
2. Samuel CE. Antiviral actions of interferon. Interferon-regulated cellular proteins and their surprisingly selective antiviral activities. *Virology* 1991;183:1-11.
3. Tilg H. New Insights into the mechanisms of interferon alfa: an immunoregulatory and anti-inflammatory cytokine. *Gastroenterology* 1997;112:1017-1021.
4. Malefyt RW. The role of type I interferons in the differentiation and function of Th1 and Th2 cells. *Semin Oncol* 1997;24:S94-S98.
5. Diaz MO, Bohlander S, Allen G. Nomenclature of the human interferon genes. *J Interferon Cytokine Res* 1996;16:179-180.
6. Tovey MG, Streuli M, Gresser I, Gugenheim J, Blanchard B, Guymarho J,

- Vignaux F, et al. Interferon messenger RNA is produced constitutively in the organs of normal individuals. *Proc Natl Acad Sci U S A* 1987;84:5038-5042.
7. Huang X, Yuan J, Goddard A, Foulis A, James RFL, Lernmark A, Pujol-Borreel R, et al. Interferon expression in the pancreases of patients with type I diabetes. *Diabetes* 1995;44:658-664.
  8. Bisat F, Raj NB, Pitha PM. Differential and cell type specific expression of murine alpha interferon genes is regulated on the transcriptional level. *Nucleic Acids Res* 1988;16:6067-6083.
  9. Foster GR, Rodrigues O, Ghouze F, Schulte-Frohlinde E, Testa D, Liao MJ, Stark GR, et al. Different relative activities of human cell-derived interferon- $\alpha$  subtypes: IFN- $\alpha$ 8 has very high antiviral potency. *J Interferon Cytokine Res* 1996;16:1027-1033.
  10. Tanaka N, Taniguchi T. Cytokine gene regulation: regulatory cis-elements and DNA binding factors involved in the interferon system. *Adv Immunol* 1992;52:263-281.
  11. MacDonald NJ, Kuhl D, Maguire D, Naf D, Gallant P, Goswamy A, Hug H, et al. Different pathways mediate virus inducibility of the human IFN- $\alpha$ 1 and IFN- $\beta$  genes. *Cell* 1990;60:767-779.
  12. Au WC, Su Y, Raj NBK, Pitha PM. Virus-mediated induction of interferon- $\alpha$  gene requires cooperation between multiple binding factors in the interferon- $\alpha$  promoter region. *J Biol Chem* 1993;268:24032-24040.
  13. Dent CL, Gewert DR. A regulatory domain within virus-response element of the interferon- $\alpha$ 1 gene acts as a transcriptional repressor sequence and determinant of cell-specific gene expression. *Eur J Biochem* 1996;236:895-903.
  14. Foster GR, Ackrill AM, Goldin RD, Kerr IM, Thomas HC, Stark GR. Expression of the terminal protein region of hepatitis B virus inhibits cellular responses to interferons  $\alpha$  and  $\gamma$  double-stranded RNA. *Proc Natl Acad Sci U S A* 1991;88:2888-2892.
  15. Bukh J, Miller RH, Purcell RH. Genetic heterogeneity of hepatitis C virus: quasispecies and genotypes. *Semin Liver Dis* 1995;15:41-63.
  16. Woitas RP, Lechmann M, Jung G, Kaiser R, Sauerbruch T, Spengler U. CD30 induction and cytokine profiles in hepatitis C virus core-specific peripheral blood T lymphocytes. *J Immunol* 1997;159:1012-1018.
  17. Gale MJ, Korth MJ, Tang NM, Tan SL, Hopkins DA, Dever TE, Polyak SJ, et al. Evidence that hepatitis C virus resistance to interferon is mediated through repression of the PKR protein kinase by the nonstructural 5A protein. *Virology* 1997;230:217-227.
  18. Weissmann C, Weber H. The interferon genes. *Prog Nucleic Acid Res Mol Biol* 1986;33:251-300.
  19. Goeddel DV, Leung DW, Dull TJ, Gross M, Lawn RM, McCandliss R, Seeburg PH, et al. The structure of eight distinct cloned human leukocyte interferon cDNAs. *Nature* 1981;290:20-26.
  20. Derynck R, Content J, DeClercq E, Volckaert G, Tavernier J, Devos R, Fiers W. Isolation and structure of a human fibroblast interferon gene. *Nature* 1980;285:542-547.
  21. Ng SY, Gunning P, Eddy R, Ponte P, Leavitt J, Shows T, Keddes L. Evolution of the functional human  $\beta$ -actin gene and its multi-pseudogene family: conservation of noncoding regions and chromosomal dispersion of pseudogenes. *Mol Cell Biol* 1985;5:2720-2732.
  22. Larrea E, García N, Qian C, Civeira MP, Prieto J. Tumor necrosis factor  $\alpha$  gene expression and the response to interferon in chronic hepatitis C. *HEPATOLOGY* 1996;23:210-217.
  23. Gavier B, Martinez-González MA, Riezu-Boj JI, Lasarte JJ, García N, Civeira MP, Prieto J. Viremia after one month of interferon therapy predicts treatment outcome in patients with chronic hepatitis C. *Gastroenterology* 1998;113:1647-1653.
  24. Brandt ER, Linnane AW, Devenish RJ. Expression of IFN A genes in subpopulations of peripheral blood cells. *Br J Haematol* 1994;86:717-725.
  25. Nouri-Aria KT, Arnold J, Davison F, Portmann BC, Meager A, Morris AG, Alexander GJ, et al. Hepatic interferon-alpha gene transcripts and products in liver specimens from acute and chronic hepatitis B virus infection. *HEPATOLOGY* 1991;13:1029-1034.
  26. Dienes HP, Hess G, Woorsdorfer M, Rossol S, Gallati H, Ramadori G, Meyer-zum-Buschenfelde KH. Ultrastructural localization of interferon-producing cells in the livers of patients with chronic hepatitis B. *HEPATOLOGY* 1991;13:321-326.
  27. Greenway AL, Hertzog PJ, Devenish RJ, Dudley FJ, McMullen GL, Linnane AW. Immunolocalisation of interferon-alpha in hepatitis C patients and its correlation with response to interferon-alpha therapy. *J Hepatol* 1994;21:842-852.
  28. Ghanekar S, Zheng L, Logar A, Navratil J, Borowski L, Gupta P, Rinaldo C. Cytokine expression by human peripheral blood dendritic cells stimulated in vitro with HIV-1 and herpes simplex virus. *J Immunol* 1996;157:4028-4036.
  29. Pestka S, Baron S. Definition and classification of the interferons. *Methods Enzymol* 1981;78:3-14.
  30. Reis LFL, Harada H, Wolchok JD, Taniguchi T, Vilcek J. Critical role of a common transcription factor, IRF-1, in the regulation of IFN- $\beta$  and IFN-inducible genes. *EMBO J* 1992;11:185-193.
  31. Domanski P, Nadeau OW, Plataniias LC, Fish E, Kellum M, Pitha P, Colamonic OR. Differential use of the  $\beta_L$  subunit of the type I interferon (IFN) receptor determines signaling specificity for IFN $\alpha$ 2 and IFN $\beta$ . *J Biol Chem* 1998;273:3144-3147.
  32. Gil B, Qian C, Riezu-Boj JI, Civeira MP, Prieto J. Hepatic and extrahepatic HCV RNA strands in chronic hepatitis C: different patterns of response to interferon treatment. *HEPATOLOGY* 1993;18:1050-1054.
  33. Davis GL. Interferon treatment of chronic hepatitis C. *Am J Med* 1994;96:41-46.